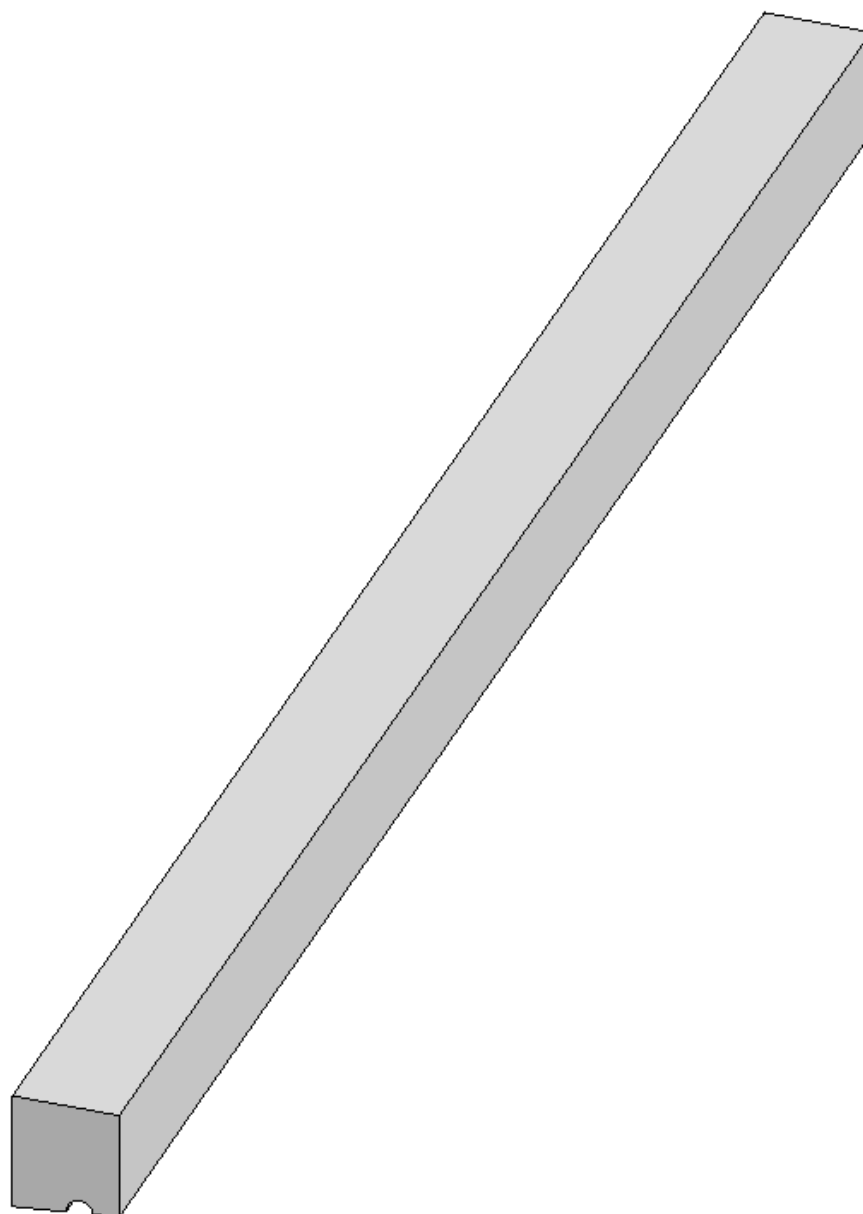
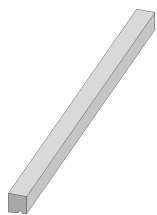


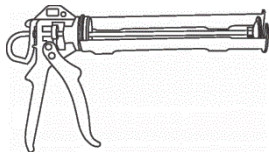
ISOLNEZ



MATERIEL NECESSAIRE



ISOLNEZ



TACK GUN



TACK 400



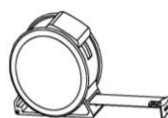
CRAYON



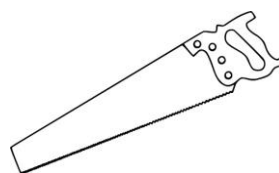
SPATULE



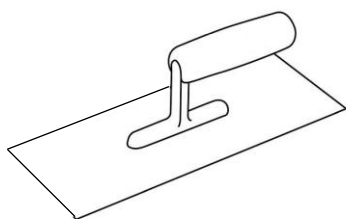
PINCEAU



METRE



SCIE

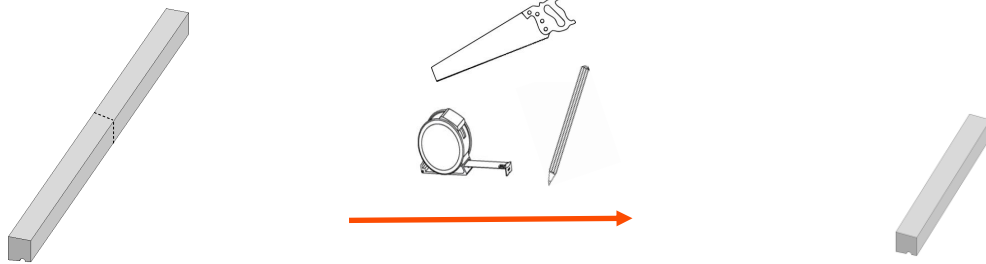


PLATOIR

INFORMATIONS ISOLNEZ			INFORMATIONS COLLES		
DIMENSIONS (mm x mm x mm)	CONDUCTIVITE THERMIQUE (λ)	RESISTANCE A LA COMPRESSION (10%)	CAPACITE	RESISTANCE MAXIMUM (ISO 37)	CONSOMMATION POUR UTILISATION STANDARD
Maximum 2300mm X 65mm x 60mm	Kerdyn Green 180 :		Tack 400 :		
	0,040 W/m.K	3,05 N/mm ²	290 ml	2,5 N/mm ²	~ 7 m linéaire

POSE DU NEZ

①



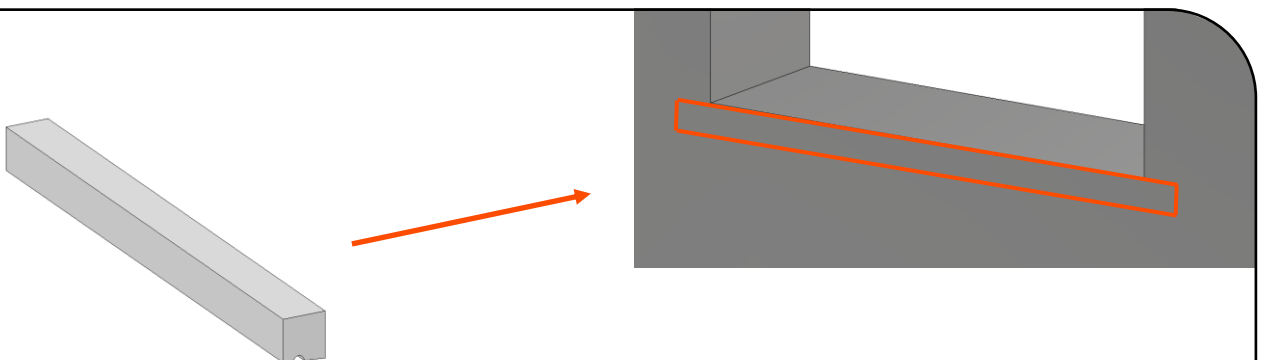
Ajuster la longueur de l'Isolnez selon la longueur de la fenêtre + sur-longueurs latérales
Abouter plusieurs éléments pour les longueurs > 2300mm

②



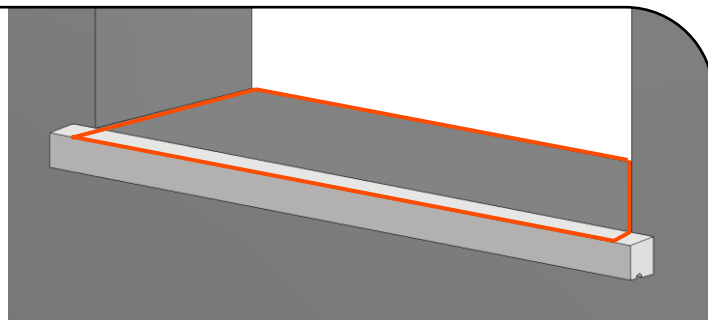
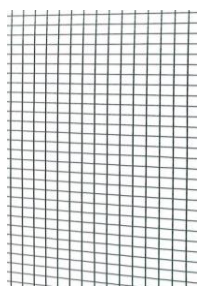
Encoller l'Isolnez à l'aide de la Tack400.

③



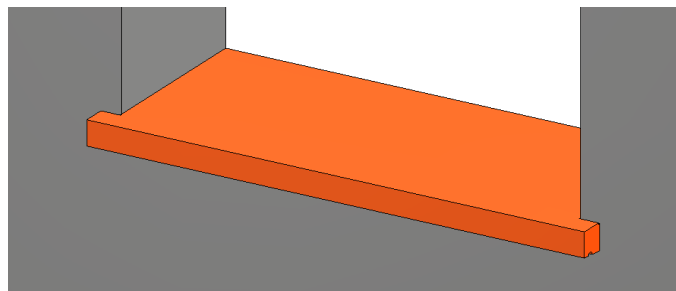
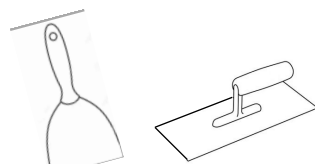
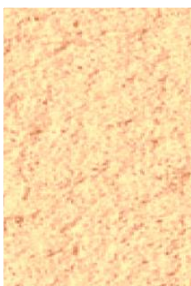
Positionner l'Isolnez ajusté avec l'arase

④



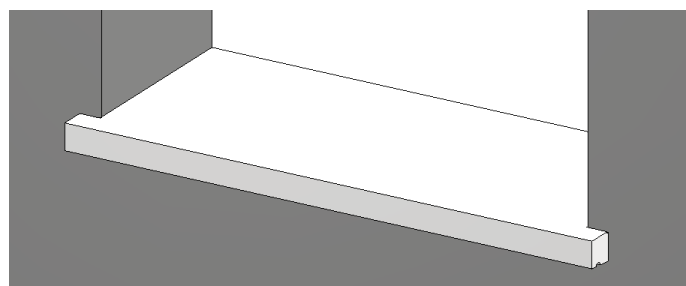
Traiter l'entoilage supérieur destiné à éviter les microfissures

⑤



Enduire avec l'enduit lisse le dessus, la partie avant et les extrémités de l'Isolnez

⑥



Peindre l'ensemble y compris le dessous de l'Isolnez